

# **Norwich Western Link**

## **Environmental Statement**

### **Chapter 8: Cultural Heritage**

#### **Appendix 8.8: WSI Figures**

Author: WSP UK Limited

Document Reference: 3.08.08

Version Number: 00

Date: March 2024

## Contents

1 Figures ..... 4

### Figures

Figure 1-1 Site Location Plan - Map showing the Red Line Boundary of the Proposed Scheme ..... 5

Figure 1-2 Composite plan of all proposed works, both within and outside the red line boundary, including Strip, Map and Sample (SMS), Watching Brief, and Evaluation trenches ..... 6

Figure 1-3 Composite plan showing the locations of all proposed works, Strip, Map and Sample (SMS), Watching Brief, and Evaluation trenches in the southern portion of the scheme ..... 7

Figure 1-4 Composite plan showing locations of all proposed works, Strip, Map and Sample (SMS), Watching Brief, and Evaluation trenches in the central portion of the scheme ..... 8

Figure 1-5 Composite plan showing locations of all proposed works, Strip, Map and Sample (SMS), Watching Brief, and Evaluation trenches in the central portion of the scheme ..... 9

Figure 1-6 Composite plan showing locations of all proposed works, Strip, Map and Sample (SMS), Watching Brief, and Evaluation trenches in the northern portion of the scheme ..... 10

Figure 1-7 Proposed Strip, map and sample (SMS) areas overlaid onto the Oxford Archaeology 2022 trial trench evaluation results, and the preceding geophysics results ..... 11

Figure 1-8 Proposed Strip, map and sample (SMS) areas overlaid onto the Oxford Archaeology 2022 trial trench evaluation results, and geophysics results in the southern portion of the site ..... 12

Figure 1-9 Proposed Strip, map and sample (SMS) areas overlaid onto the Oxford Archaeology 2022 trial trench evaluation results, and geophysics results in the central portion of the site ..... 13

Figure 1-10 Proposed Strip, map and sample (SMS) areas overlaid onto the Oxford Archaeology 2022 trial trench evaluation results, and geophysics results in the central portion of the site ..... 14

Figure 1-11 Proposed Strip, map and sample (SMS) areas overlaid onto the Oxford Archaeology 2022 trial trench evaluation results, and geophysics results in the northern portion of the site ..... 15

Figure 1-12 Proposed Watching Brief areas within the Red Line Boundary ..... 16

Figure 1-13 Map showing the location of Trenches remaining to be excavated (TT21 trenches) from the preceding phase of evaluation.....	17
Figure 1-14 Location of Trenches proposed to be excavated in the Proposed Scheme .....	18
Figure 1-15 Proposed preservation in situ areas.....	19

# 1 **Figures**

- 1.1.1 The following chapter includes figures showing the proposed archaeological mitigation works within the Red Line Boundary of the Proposed Scheme. These fourteen figures form the model and accompany the text.

**Figure 1-1 Site Location Plan - Map showing the Red Line Boundary of the Proposed Scheme**

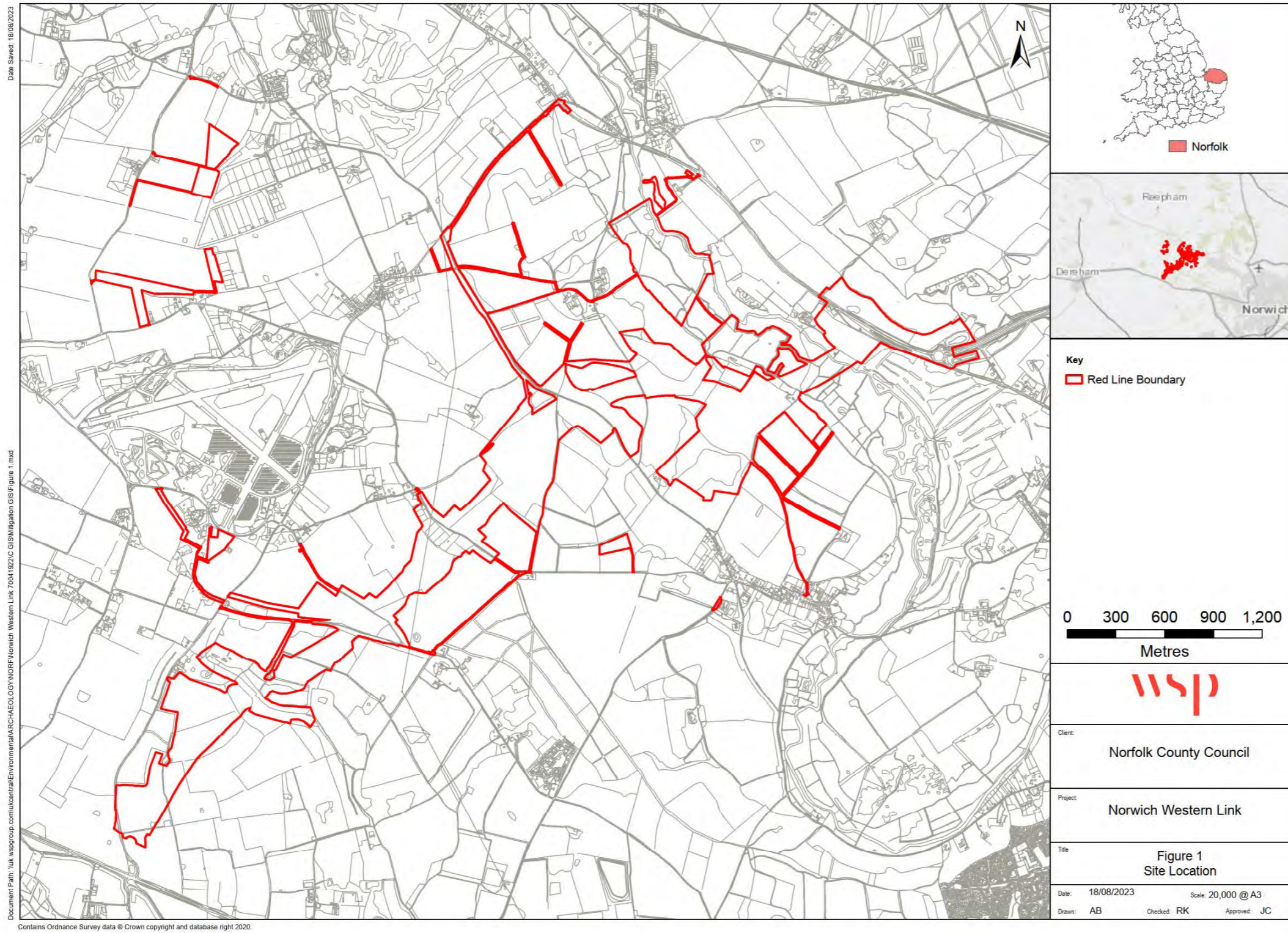
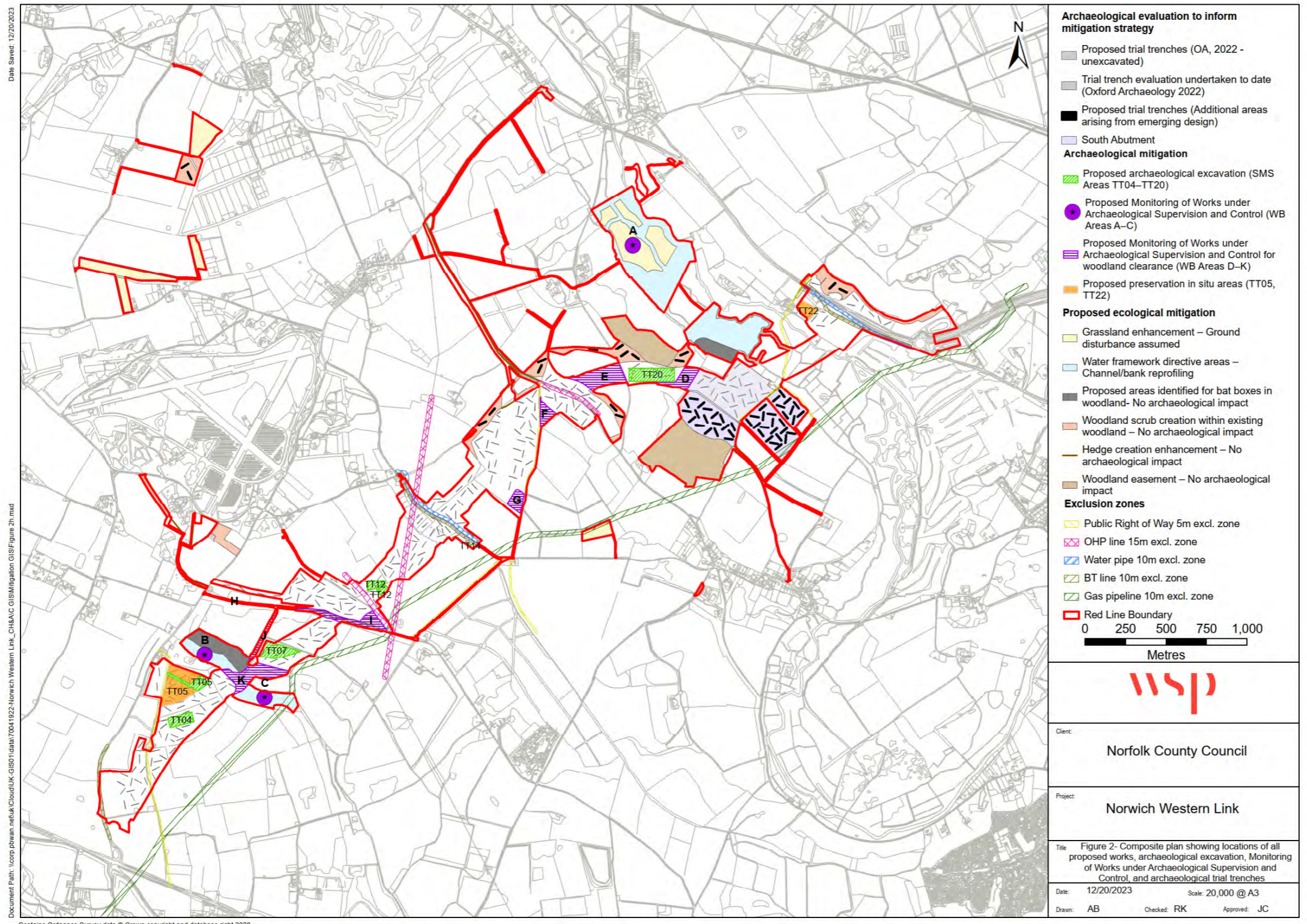
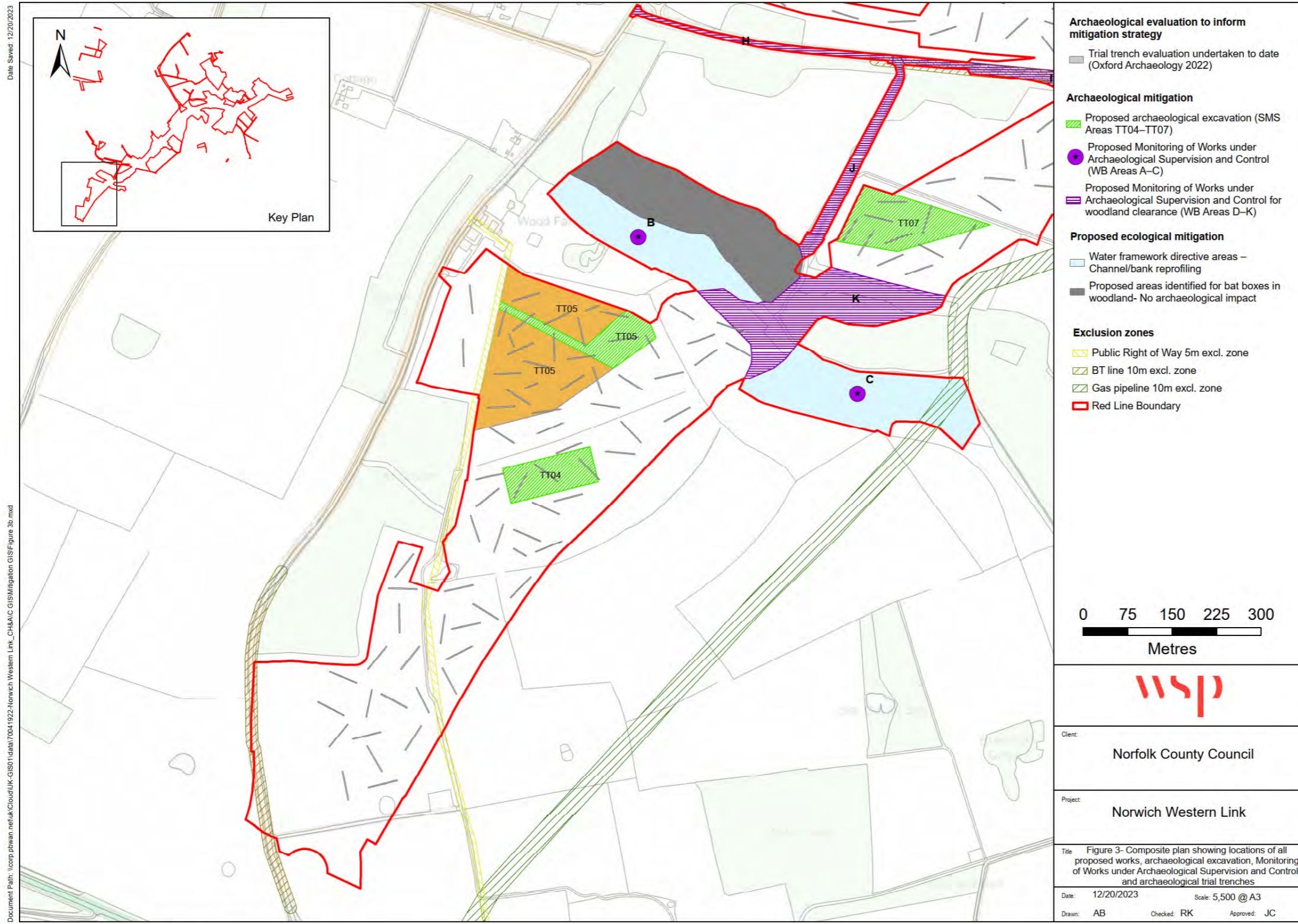


Figure 1-2 Composite plan of all proposed works, both within and outside the red line boundary, including Strip, Map and Sample (SMS), Watching Brief, and Evaluation trenches



**Figure 1-3 Composite plan showing the locations of all proposed works, Strip, Map and Sample (SMS), Watching Brief, and Evaluation trenches in the southern portion of the scheme**



**Figure 1-4 Composite plan showing locations of all proposed works, Strip, Map and Sample (SMS), Watching Brief, and Evaluation trenches in the central portion of the scheme.**

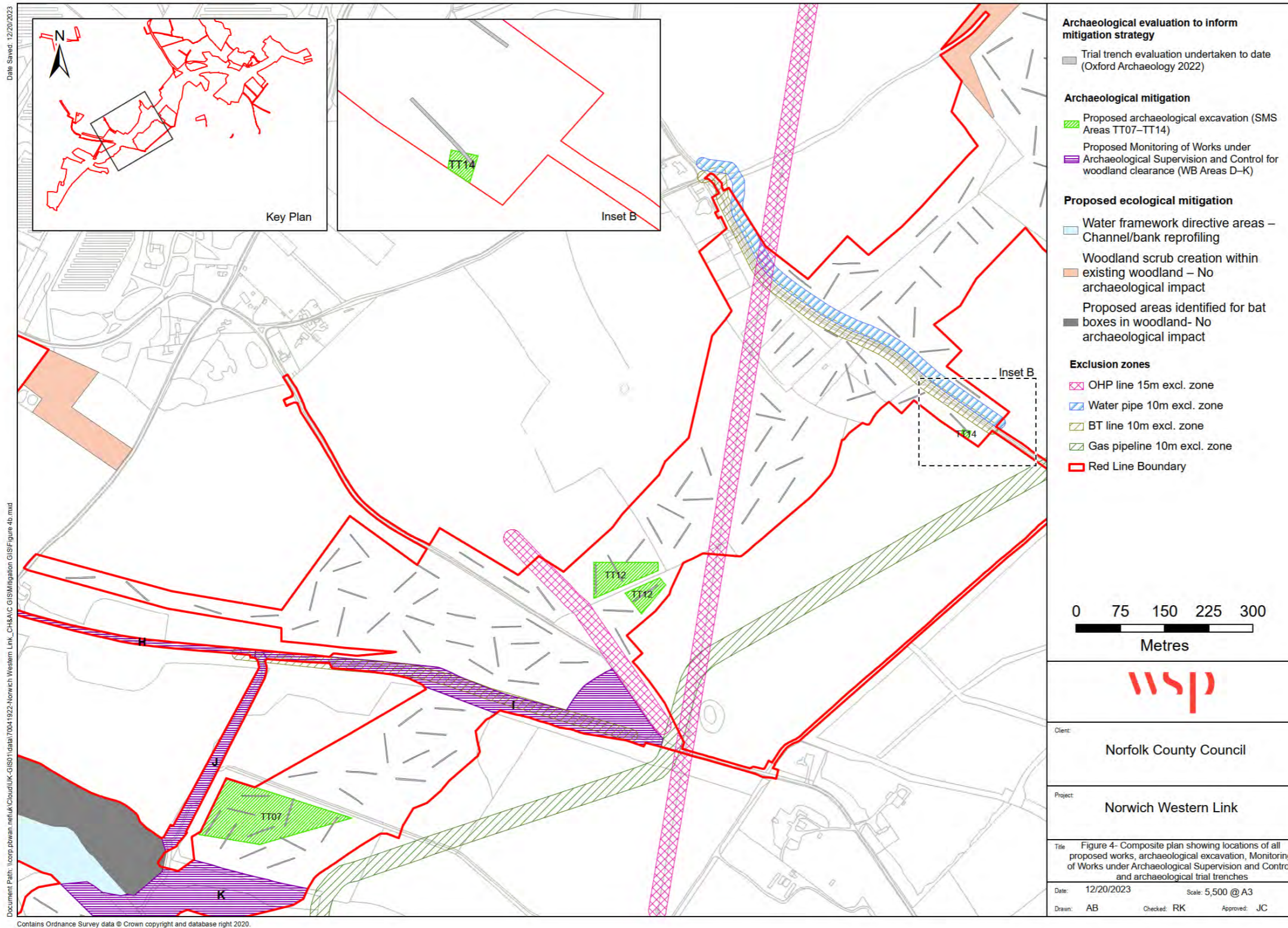




Figure 1-5 Composite plan showing locations of all proposed works, Strip, Map and Sample (SMS), Watching Brief, and Evaluation trenches in the central portion of the scheme

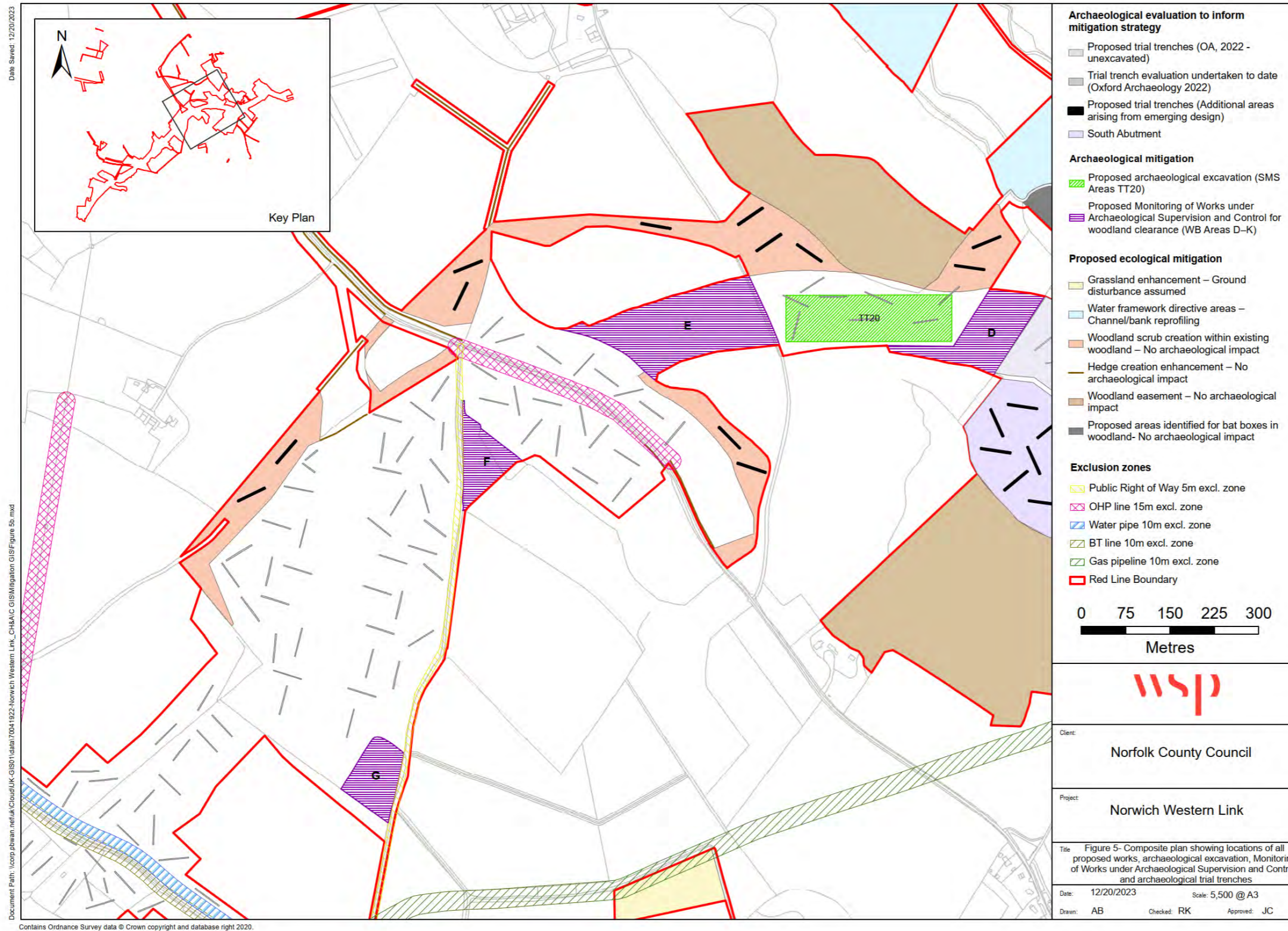


Figure 1-6 Composite plan showing locations of all proposed works, Strip, Map and Sample (SMS), Watching Brief, and Evaluation trenches in the northern portion of the scheme

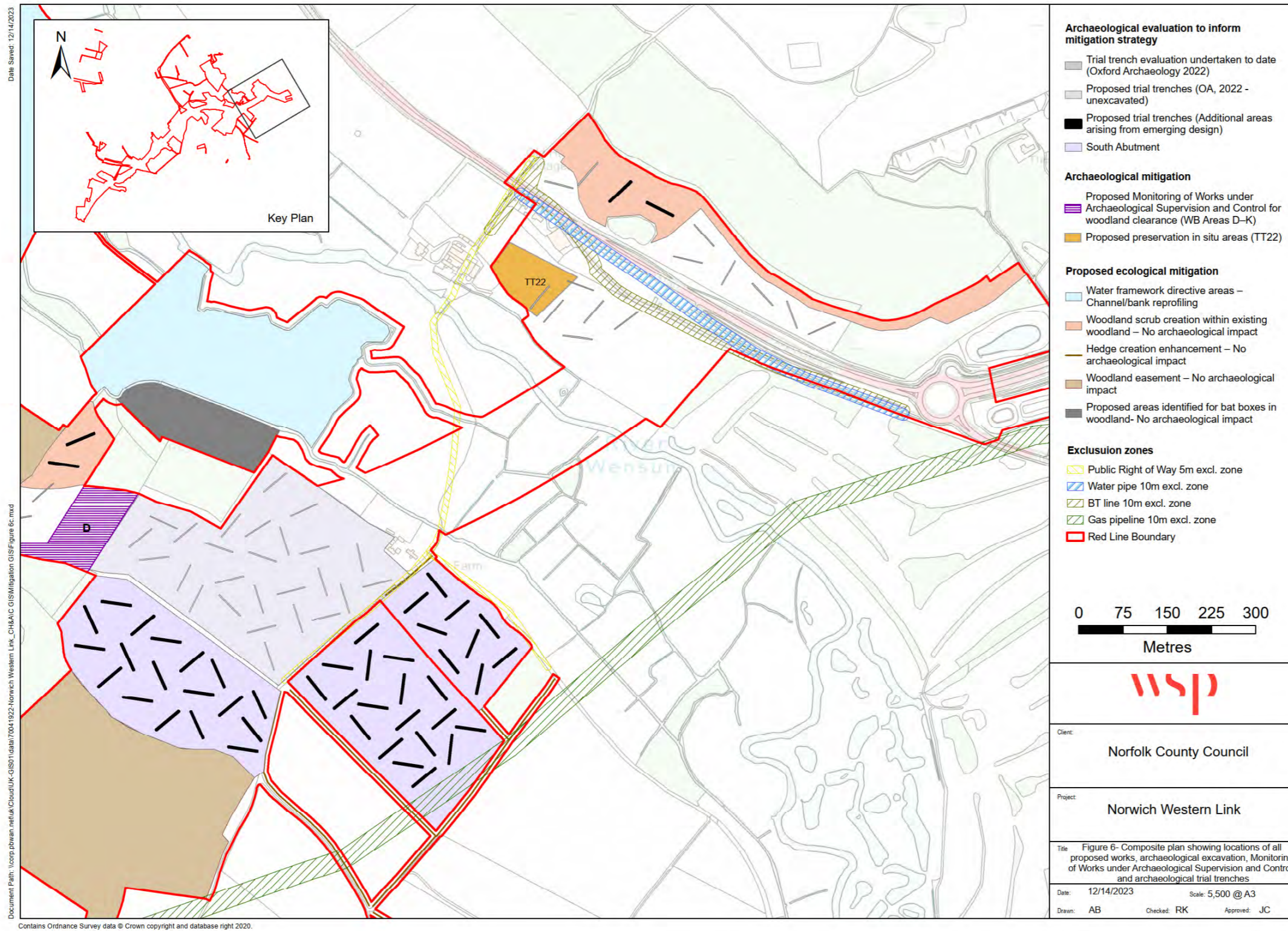


Figure 1-7 Proposed Strip, map and sample (SMS) areas overlaid onto the Oxford Archaeology 2022 trial trench evaluation results, and the preceding geophysics results

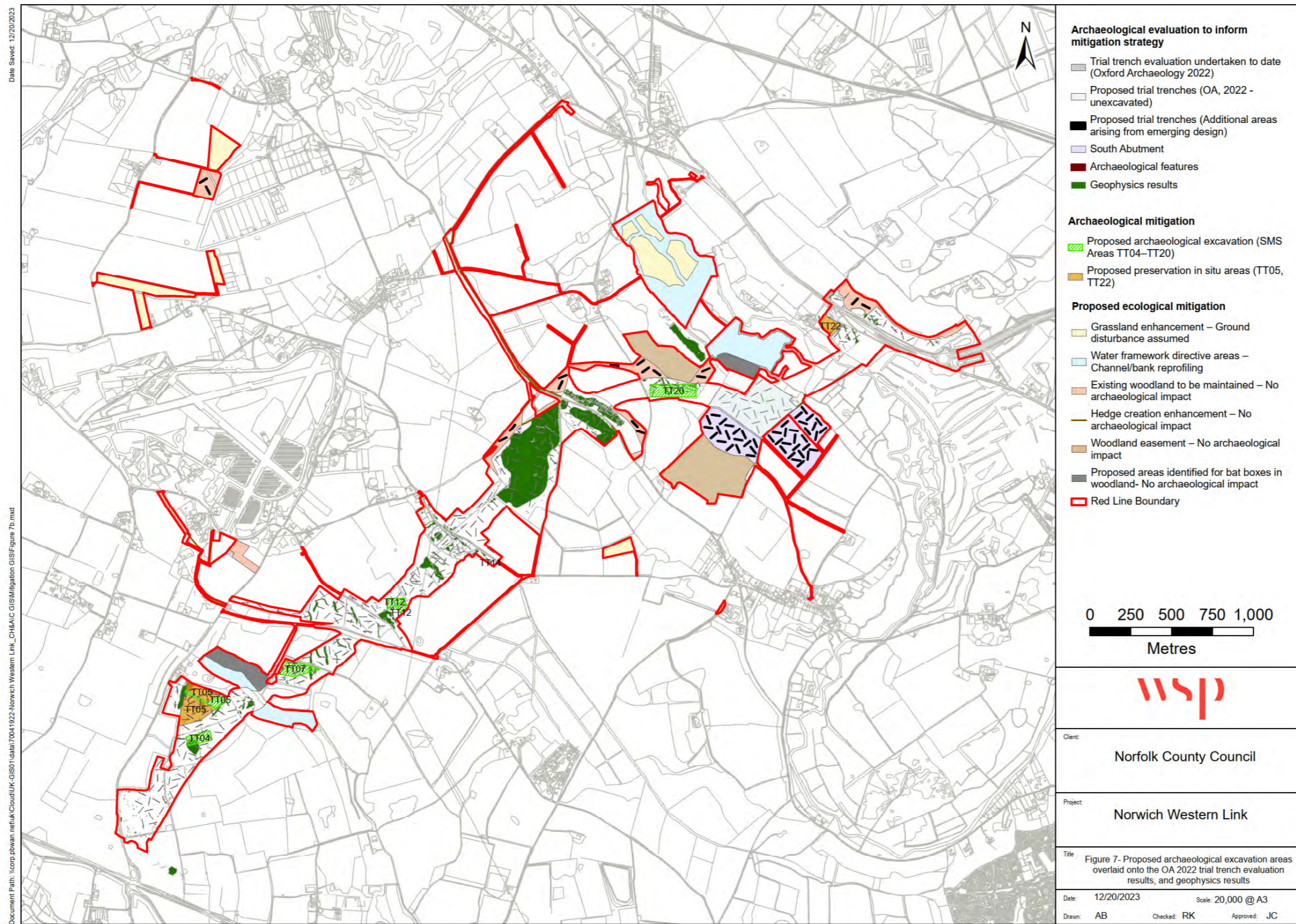


Figure 1-8 Proposed Strip, map and sample (SMS) areas overlaid onto the Oxford Archaeology 2022 trial trench evaluation results, and geophysics results in the southern portion of the site

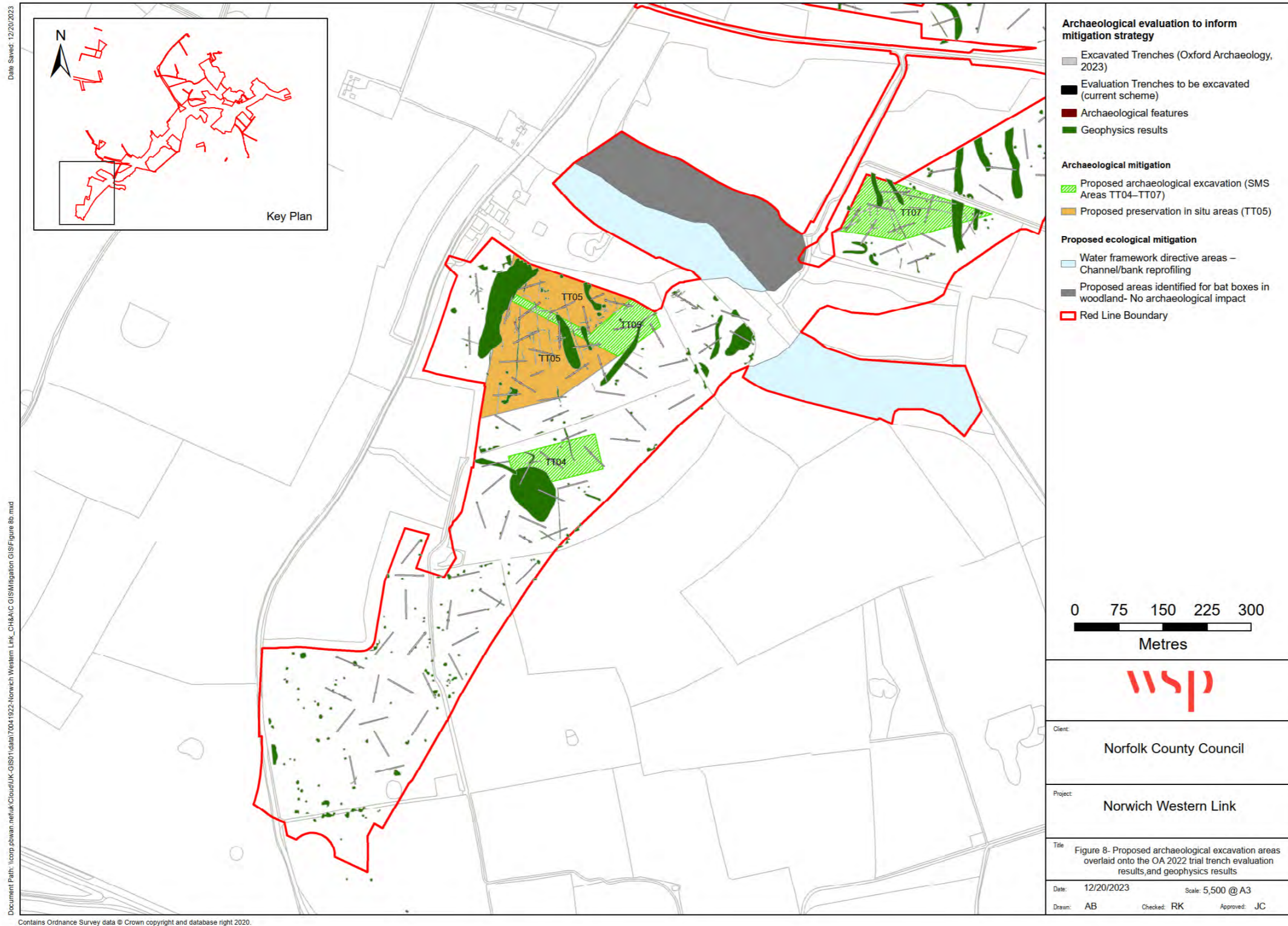


Figure 1-9 Proposed Strip, map and sample (SMS) areas overlaid onto the Oxford Archaeology 2022 trial trench evaluation results, and geophysics results in the central portion of the site

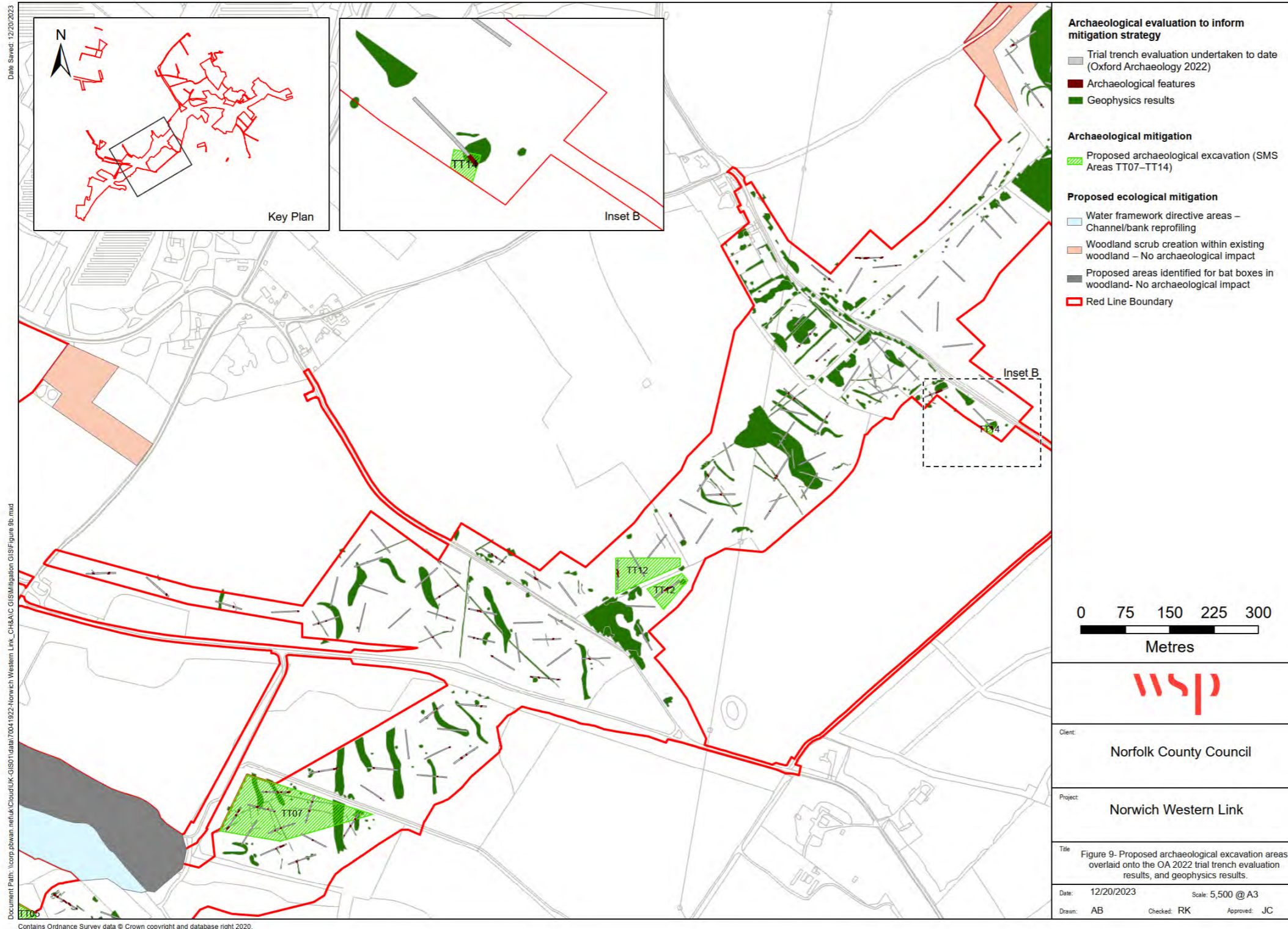
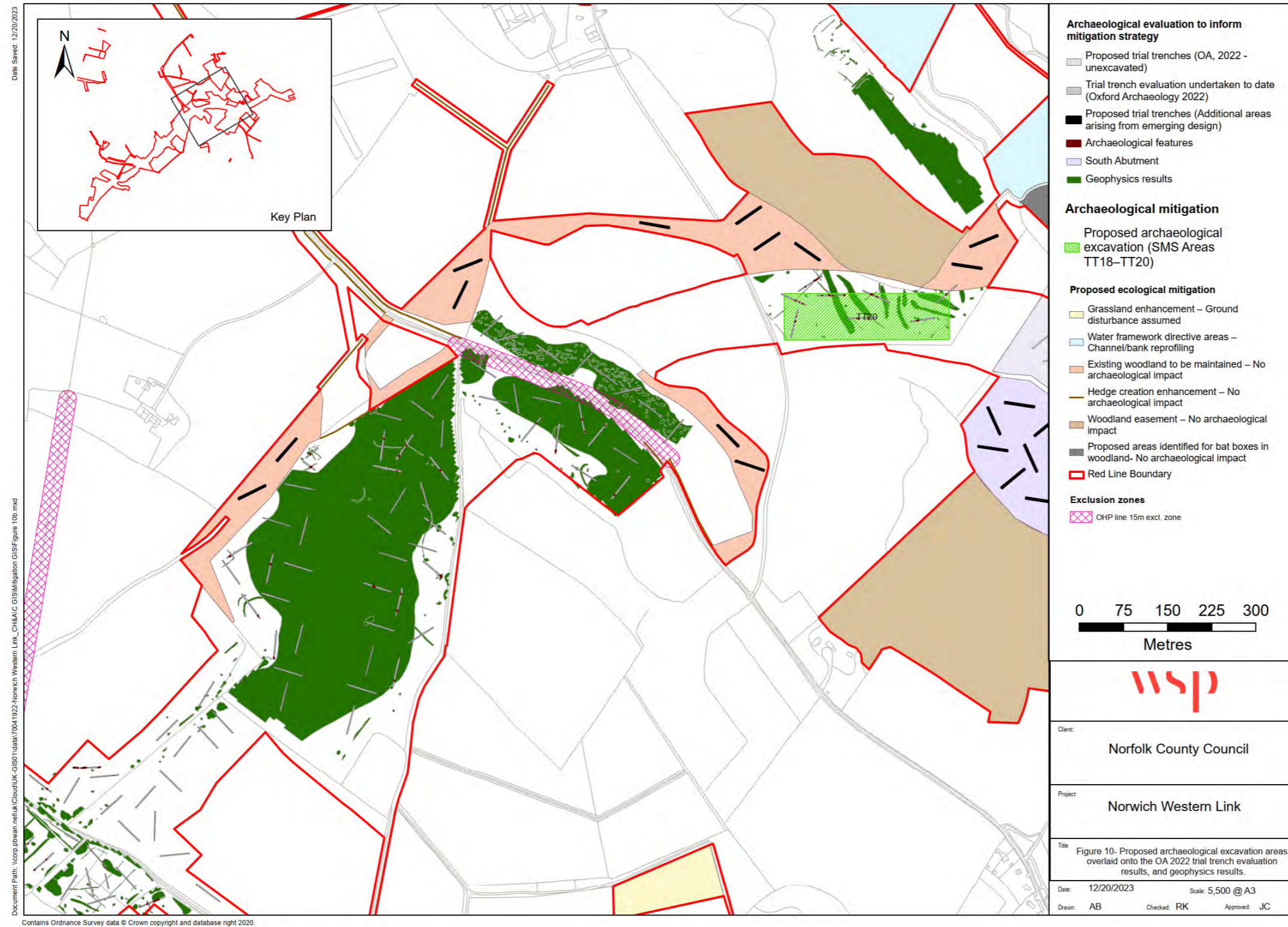
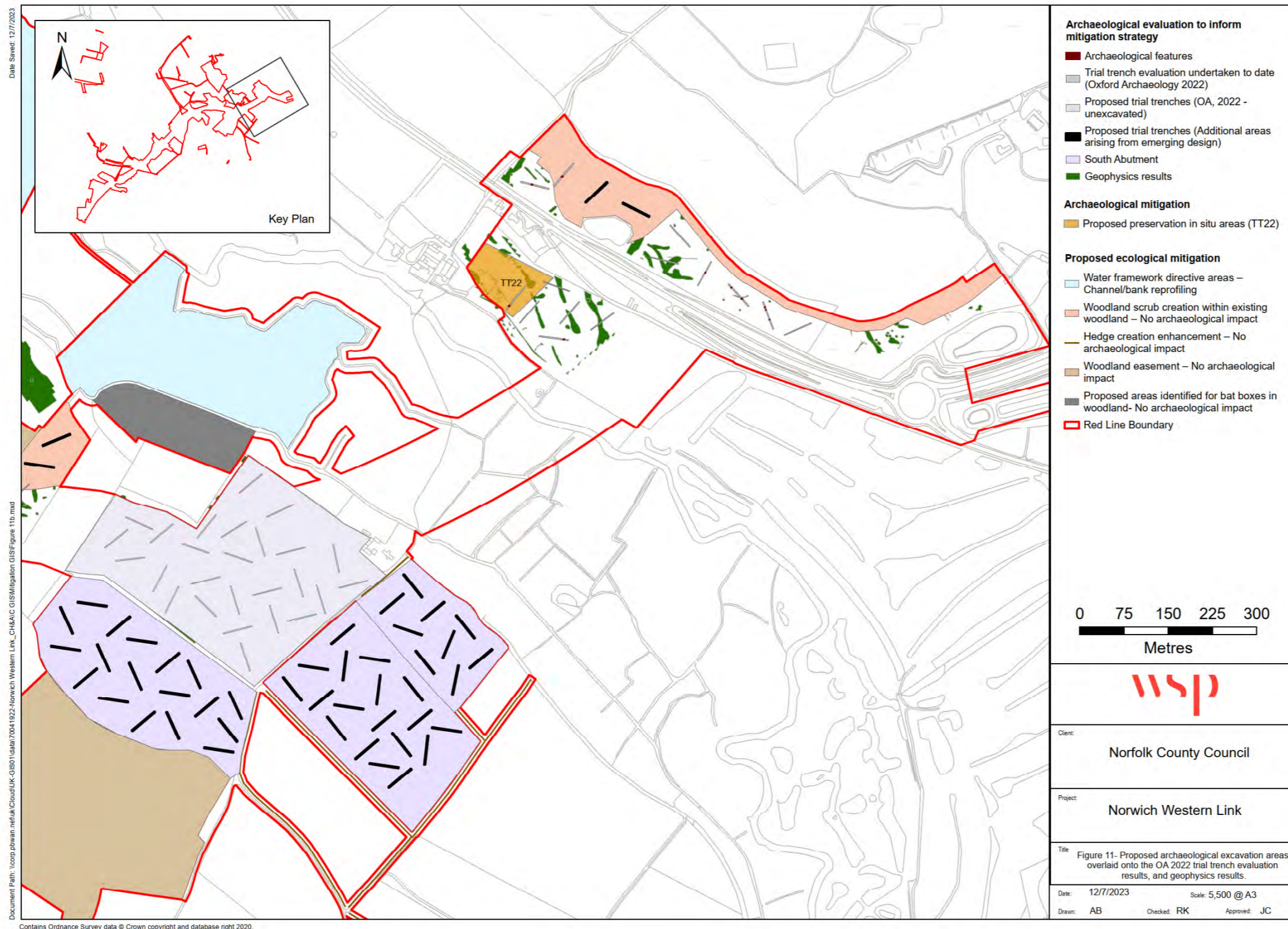


Figure 1-10 Proposed Strip, map and sample (SMS) areas overlaid onto the Oxford Archaeology 2022 trial trench evaluation results, and geophysics results in the central portion of the site



**Figure 1-11 Proposed Strip, map and sample (SMS) areas overlaid onto the Oxford Archaeology 2022 trial trench evaluation results, and geophysics results in the northern portion of the site**



**Figure 1-12 Proposed Watching Brief areas within the Red Line Boundary**

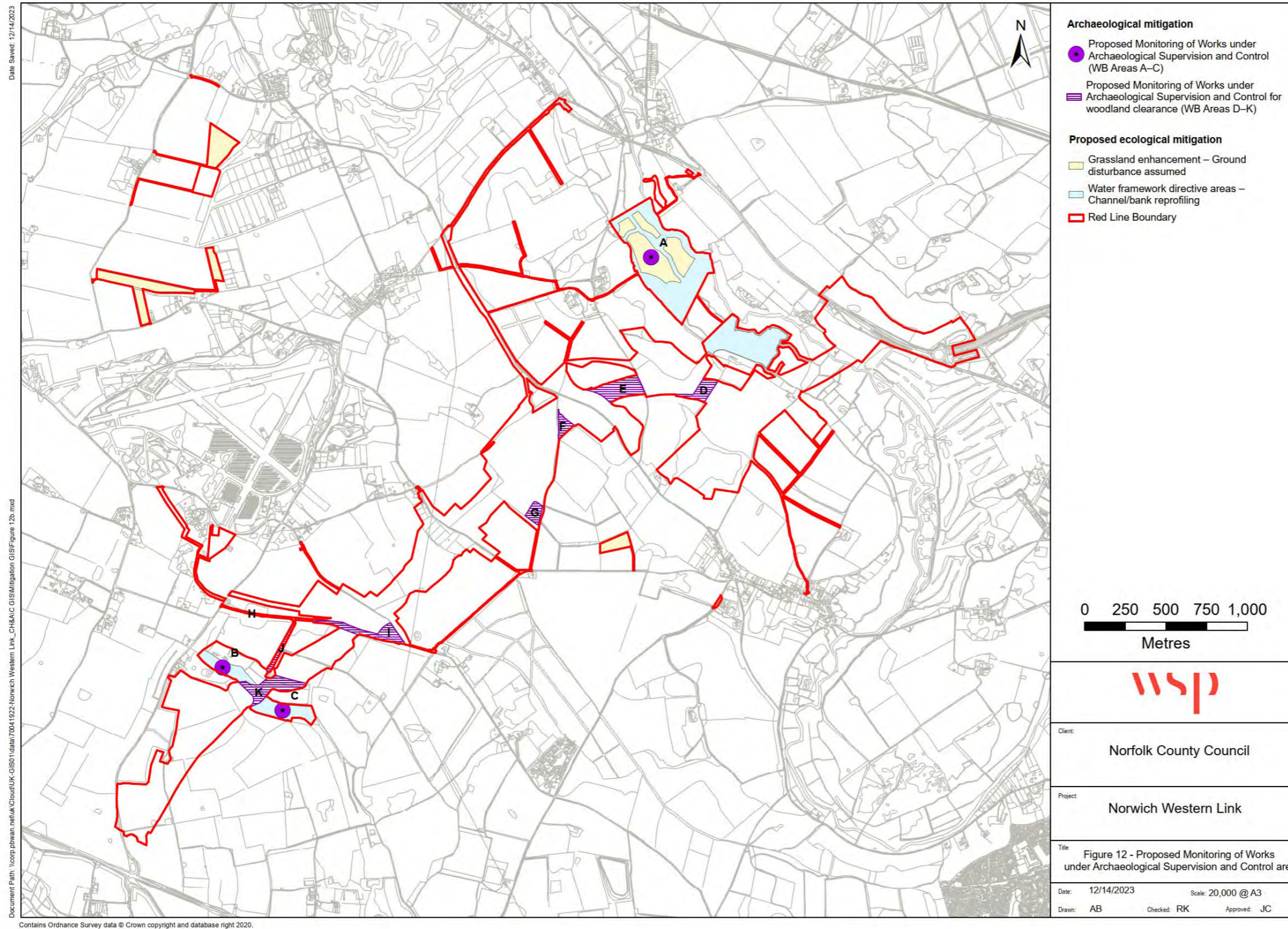
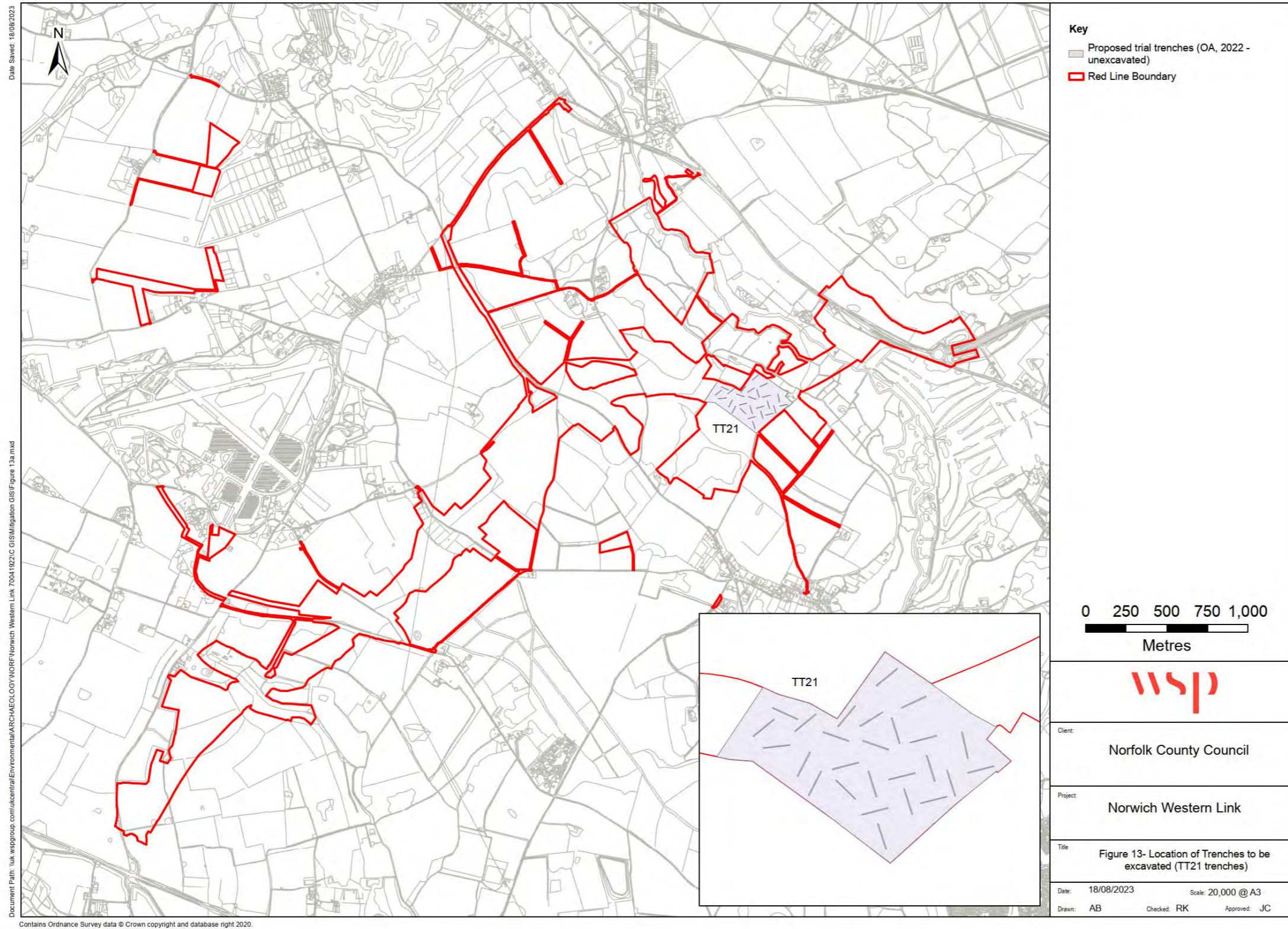
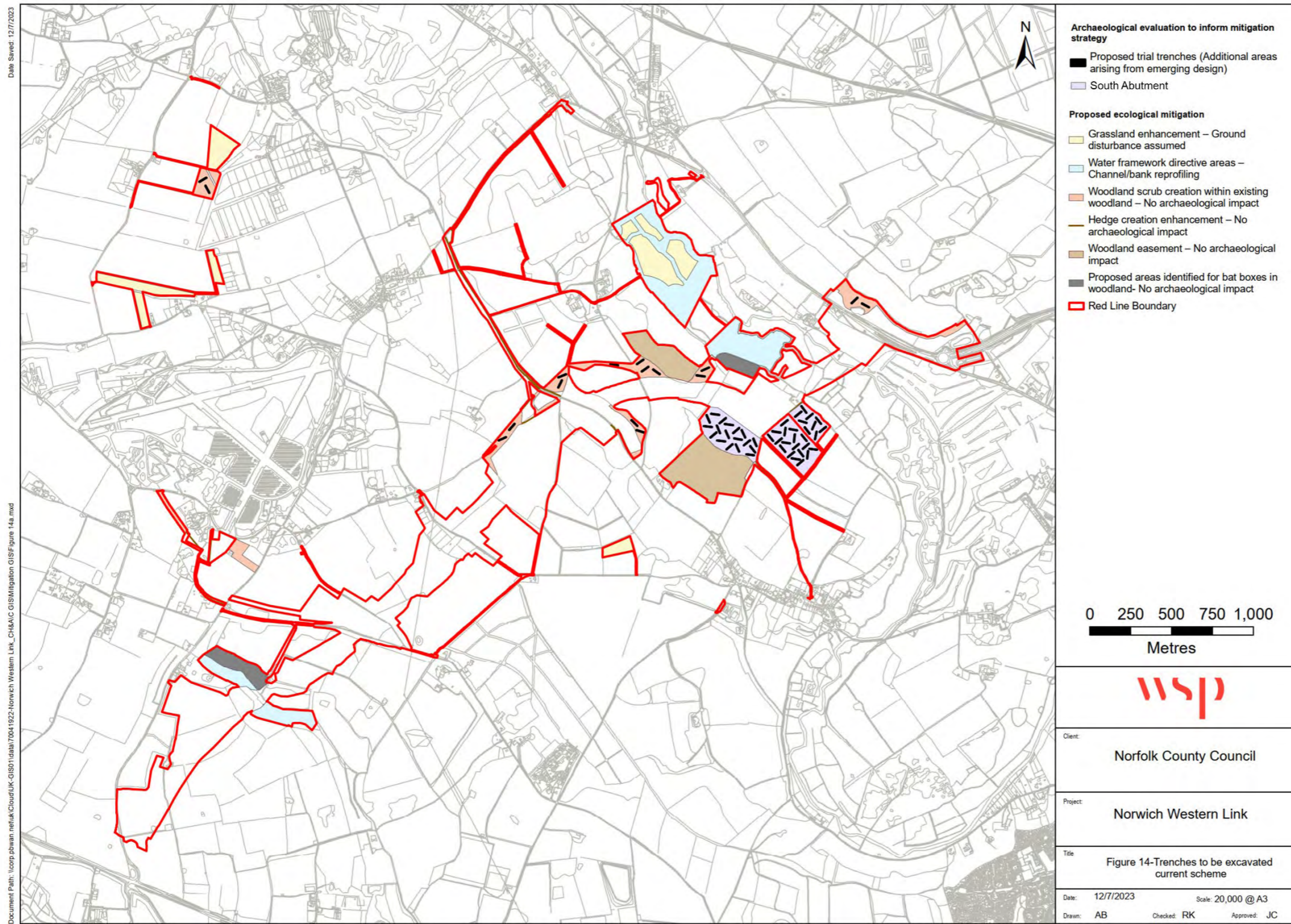




Figure 1-13 Map showing the location of Trenches remaining to be excavated (TT21 trenches) from the preceding phase of evaluation



**Figure 1-14 Location of Trenches proposed to be excavated in the Proposed Scheme**



**Figure 1-15 Proposed preservation in situ areas**

